

# Waiau School Newsletter



Term 3 . No 14  
31st August 2021

*Our community, our growth, our success, our future.*

## 2021 What's Happening

Our calendar is looking very sad...

Friday, 3rd September  
Zoom Assembly - 1pm

Wednesday, 29th September  
Pet Day

Friday, 1st October  
Last day of Term 3

Monday, 18th October  
Term 4 begins

Monday, 25th October  
Labour Day - School Closed

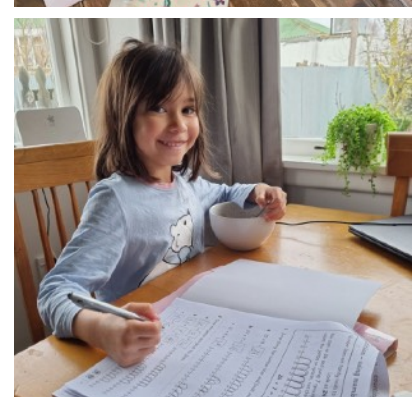
We hope you are all doing well and managing to stay upbeat during these challenging times, a sunny day like today certainly helps foster a cheerful disposition. I must acknowledge all of you, our staff and our whānau for the effort you are putting into supporting our learners. I appreciate it is a busy time of the year for many families so thank you for ensuring our young people are safe and happy during these unprecedented times. We all enjoyed seeing each other and hearing about what our learners have been up to during our Friday Hui. Please continue to share your photos and stories of your lockdown adventures.

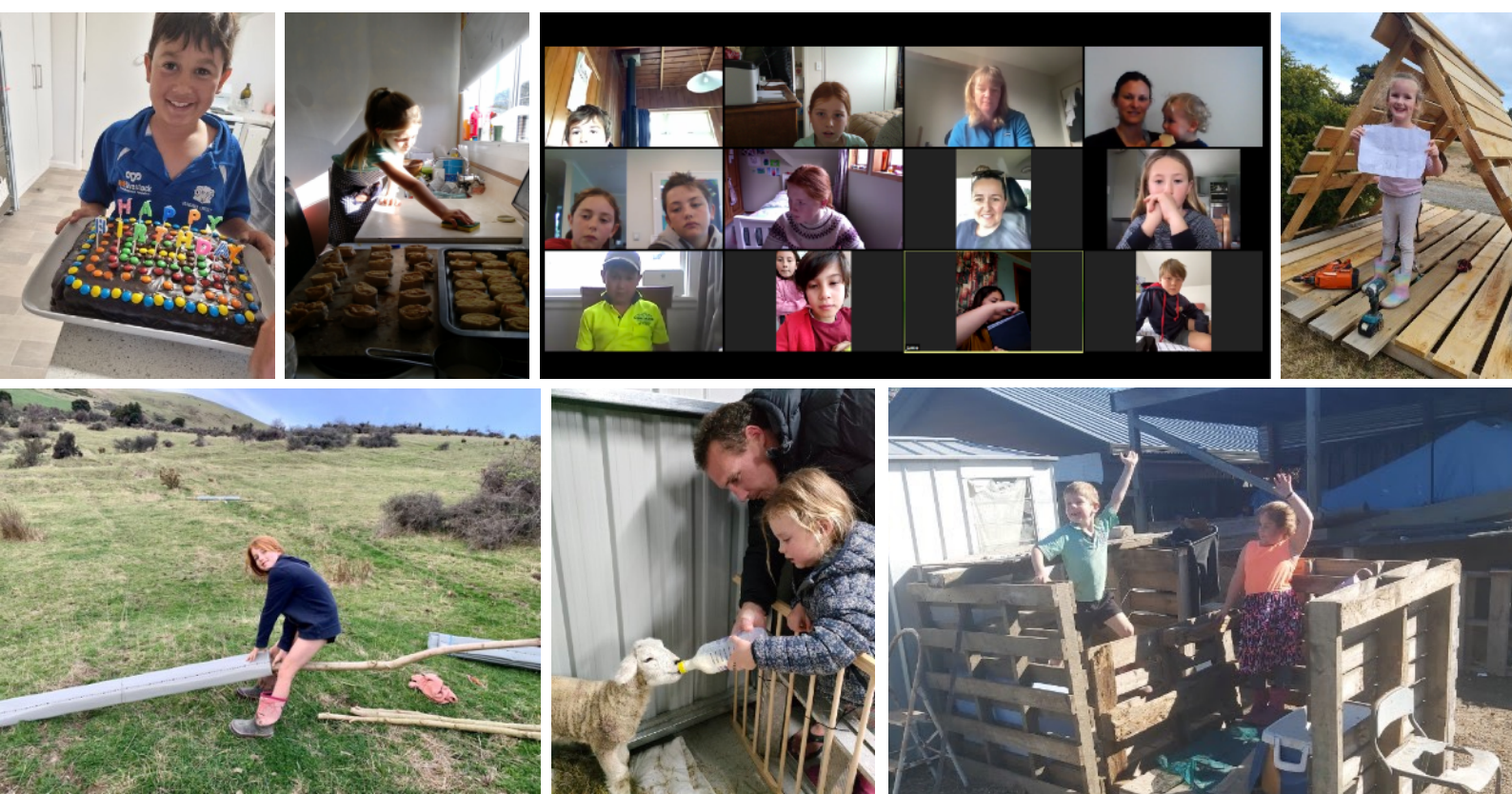
It looks like the South Island will move into Alert Level 3 tonight. We will continue with our distance learning programmes. Please don't hesitate to get in touch if you need any more support or resources, or a lesson on how to use the technology we are asking learners to use.

I am yet to receive information about what changes our school will need to enact when we move to Alert Level 2. When this information is confirmed we will let you know.

Please encourage your children to watch and interact with this internet safety film. It is important at this time to remind our learners of the responsibility they have when using technology. [Please click here](#)

[Here are some of the images the children shared last Friday.](#)





## Sports /events postponed or cancelled.

Kiwisport - *Cancelled.*

7 Aside - *has been moved to the 21st of September.*

Mairehau High School Band - *postponed to a new date - Friday the 10th September (reassess at the time).*

Pet Day - *To remain on the 29th September (we will reassess if required).*

School photos - *Postponed until further notice.*

Production - *Most likely this will be postponed until the beginning of Term 4, however please be flexible with us.*

Room 2 Camp - *We plan for camp to go ahead at this stage. This will be dependent on levels and the guidelines around what is appropriate at the time.*

*Our Community - Nō Ūkaipo  
Our Growth - Te Kunengatanga  
Our Success - Te Angitū  
Our Future - Me Tiro Ki Muri*



# Who do I talk to?

## Useful contacts

Unite  
against  
COVID-19



Communities can be affected by emergencies in different ways, and may need different types of welfare services, including the following (but not limited to);

Please call the Canterbury Welfare Call Centre **0800 24 24 11**

### Money Concerns

**Mortgages** - people should get in touch with their banks in the first instance.

**Ministry of Social Development (WINZ)**

Visit <https://www.workandincome.govt.nz>

**Living expenses, benefits, and redundancy**

0800 559 009

**Wage Subsidy**

0800 40 80 40

### Local Business Continuity

**Enterprise North Canterbury**

Visit <https://www.northcanterbury.co.nz/covid-19/>

Call: 03 327 3135

Email: [office@enterprisenc.co.nz](mailto:office@enterprisenc.co.nz)

### General Wellbeing of People

**Community Wellbeing North Canterbury Trust**

Email: [www.wellbeingnc.org.nz](mailto:www.wellbeingnc.org.nz)

Call: 03 310 6375

### Food Shortages

**Living Waters Foodbank**

Call: 03 314 2044 or 027 448 6594

**Inspire Pantry Foodbank**

Call: 03 314 6950 or 027 210 2917

Email: [inspirechurchamberley@gmail.com](mailto:inspirechurchamberley@gmail.com)

**Amberley Foodbank**

Call 03 314 7464

### Health Advice & Self Isolation

**Healthline**

Call: 0800 358 5453

**Ministry of Health**

Visit [www.health.govt.nz/coronavirus](http://www.health.govt.nz/coronavirus)

### COVID-19 Questions

**New Zealand Government COVID-19 Team**

Visit [www.covid19.govt.nz](http://www.covid19.govt.nz)

## Children

### Oranga Tamariki

0508 326 459 | [orangatamariki.govt.nz](http://orangatamariki.govt.nz)

### Mana Ake

[manaake.health.nz](http://manaake.health.nz)

### Free Parent Helpline

0800 568 856

[parenthelp.org.nz/helpline](http://parenthelp.org.nz/helpline)

### Home Schooling Advice

04 463 8000 | [education.govt.nz](http://education.govt.nz)

### Plunket Line

0800 933 922 | [plunket.org.nz](http://plunket.org.nz)

## Addiction Services

### Problem Gambling Foundation

0800 664 262 | [pgf.nz](http://pgf.nz)

### Salvation Army Oasis Centre for Problem Gambling

0800 5300 00 | [Oasis.salvationarmy.org.nz](http://Oasis.salvationarmy.org.nz)

### Odyssey House: Alcohol and Drug Support

03 358 2690 | [odysseychch.org.nz](http://odysseychch.org.nz)

### Family Drug Support

0800 337 877 | [fds.org.nz](http://fds.org.nz)

[Connected.govt.nz](http://Connected.govt.nz) | 0800 264 737

Connected is a service to help New Zealanders connect to the wide range of Employment, Education and Training supports and advice available through government agencies.

## Hurunui Foodbanks

### Amberley Foodbank

03 314 7464

### Living Waters

03 314 2044 | 027 448 6594 | 027 448 6583

### The Pantry

027 210 2917 | 03 314 8123

## Contact Us

If you are unsure of who to contact for support, you can touch base with Hurunui District Council for a steer in the right direction

- Amberley: 03 314 8816
- Cheviot Freephone: 03 319 8812
- Amuri & Hanmer Springs Freephone: 03 315 8400

Last Updated 23 August 2021



## Seeking Help Shows Strength

*Locals facing tough times are encouraged to make use of the community support that is ready to rally around them.*



Seeking Help Shows Strength

Seeking Help Shows Strength

Seeking Help Shows Strength

The Hurunui Theatre Group production of "Spamalot" is on hold and will be rescheduled to a date that suits all parties and conditions. Tickets already purchased will be transferable to any of the new dates, or refundable, with online bookings to be re-selected. Thank you.